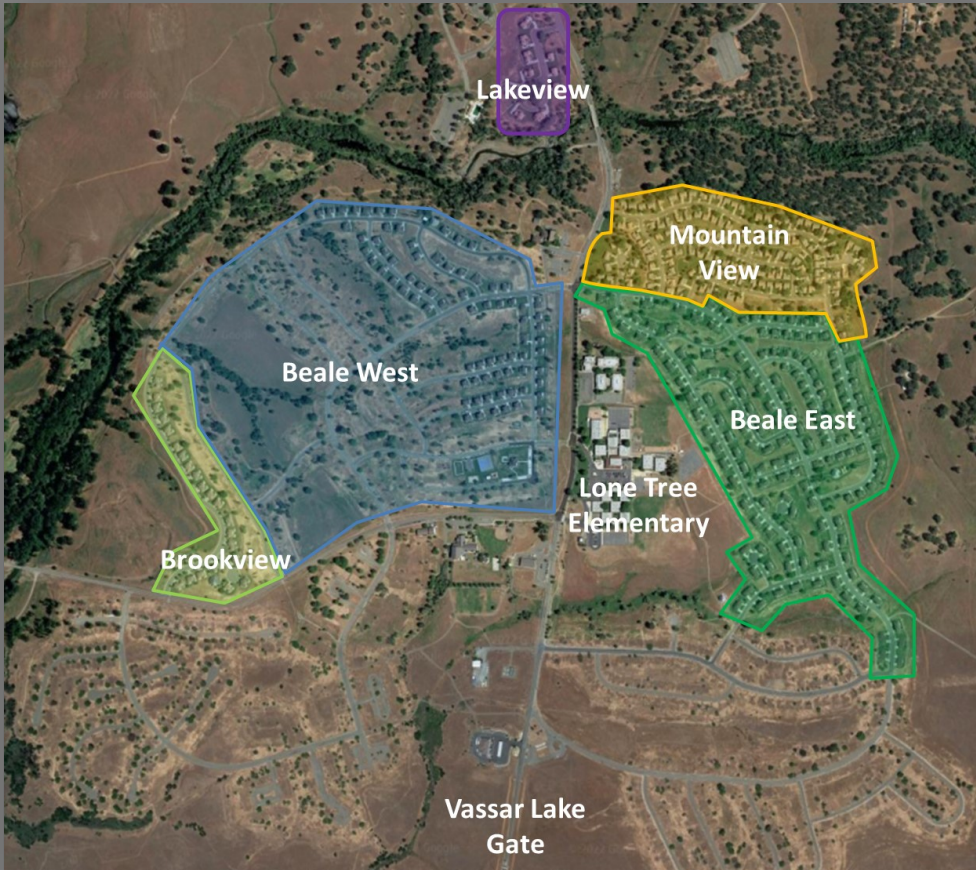


# Beale AFB Base Housing Area Evacuation Checklist



## Resident Checklist

- Know what *Neighborhood* you live in for evacuations
- Make your *Go Bag*
- Have a plan for *Children* and *Pets*
- Update your *Insurance Policies*
- Know where your *Evacuation Rally Points* are located
- Ensure your information is up to date with *AtHoc* and *Rent Café*

## Official Emergency Notification Sources

Listen for *Giant Voice Notifications*

*AtHoc* – Military members must ensure information is up to date. We recommend that spouse information be inputted as the secondary contact

*Balfour Betty's Rent Café App* – Ensure family information is up to date. Scan QR code to update your account!



## Go Bag Contents

**Personal Documents:** ID, Passports, Birth Certificates, Medical Info

**First Aid:** Medications, Bandages, List of Special Needs

**Personal Needs:** Food, Water, Flashlights, Batteries, Cash, Contact Info, Change of Clothes, Multi-Tools, N-95 Pollution Prevention Masks, Maps, Pet Food

## Fire Season Don'ts

*Don't* use spark emitting equipment in dry grass (lawn mowers, chainsaws, angle grinders)

*Don't* use fireworks, light bonfires, or use outdoor fire pits

*Don't* drive vehicles or leave them idling over dry grass

*Don't* leave grills unattended or dump hot coals in yard

*Don't* try and fight the fire

# Beale AFB Base Housing Area Evacuation Rally Points



## Primary Evacuation Rally Points

- Evacuate ***Immediately*** if you are told to do so and head to the designated Rally Points for further instruction!
- Pay attention to the evacuation notice for the ***Safest Route of Travel***
- The primary rally point for ***Housing Residents***:
  - **Recce Point Club**, Building 24081
  - **Street Address:** 17440 Warren Shingle Rd, Beale AFB, CA 95903
- The primary rally point for ***Lone Tree School*** and the ***Youth Center***:
  - **Community Activity Center**, Building 2425
  - **Street Address:** 17700 Robert Nicoletti Way, Beale AFB, CA 95903
- **Lone Tree School** and the **Youth Center** will maintain accountability of children and coordinate with the installation to safely transport them to the evacuation rally point if an evacuation is ordered
- **Alternate Evacuation Routes and Rally Points** may be established as necessary for the safety of residents, such as exiting Vassar or Grass Valley Gates and re-entering the installation at Wheatland or Doolittle Gates